

Technical Rider

Audio & Video Equipment

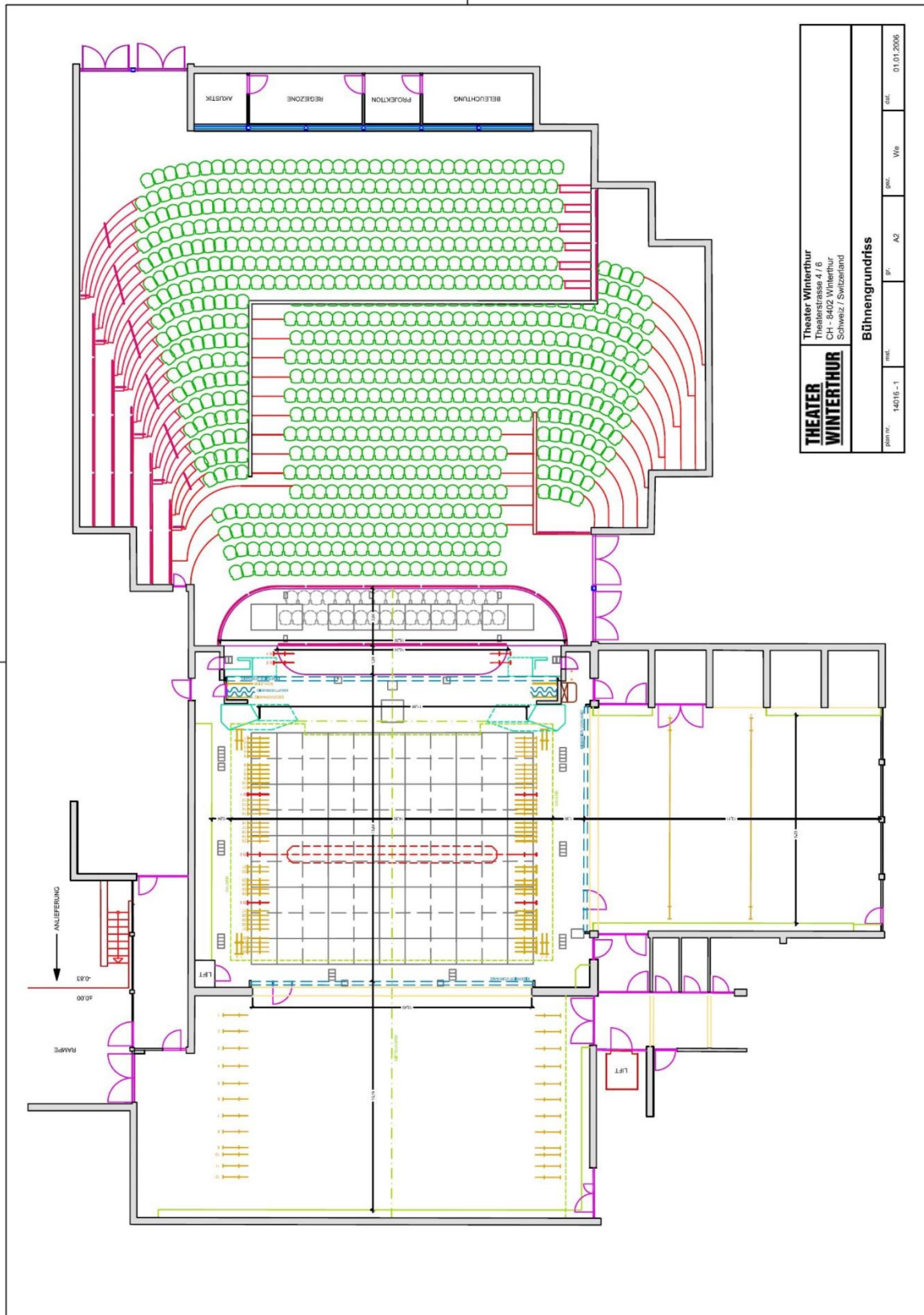
Jano Müller

Juni 2021

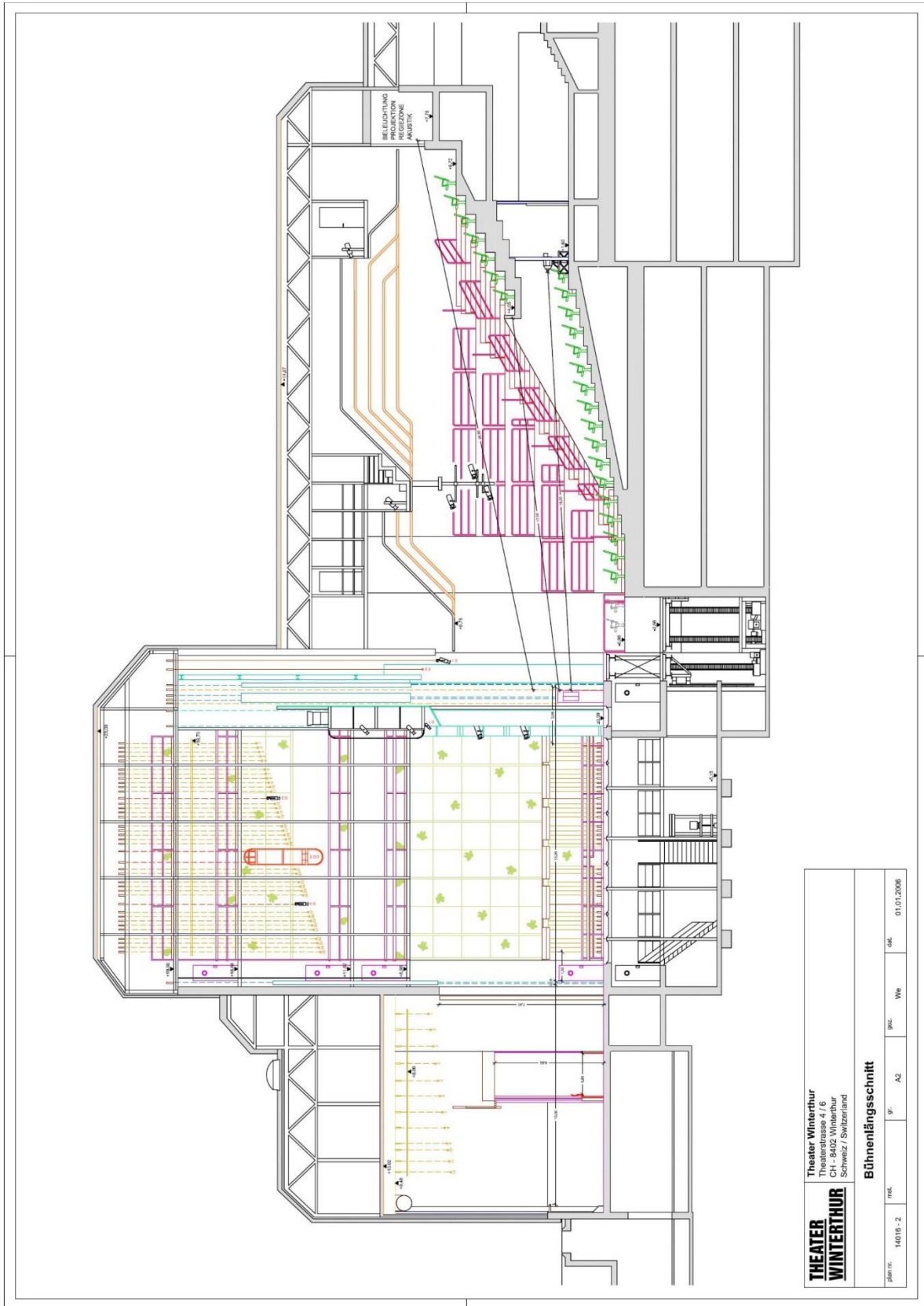
Index

PLOT	3
AUDIO	5
PERMANENTLY INSTALLED	5
<i>Mixing Desk Front of House (FOH)</i>	5
<i>Signal Distribution / Patch</i>	5
<i>Signal processing</i>	5
<i>System for the hearing impaired</i>	5
<i>PA loudspeakers per side (lighting towers)</i>	5
<i>Center (Portalbridge)</i>	5
<i>Delay line right</i>	5
<i>Effects speakers:</i>	6
<i>Installed monitoring:</i>	6
MOBILE EQUIPMENT	6
<i>Mixing Desk, Stagebox, Amps, Speaker</i>	6
<i>Players / recording devices</i>	6
<i>Mics/DI</i>	7
<i>Stands</i>	8
<i>Mikroport</i>	8
<i>Intercom</i>	8
VIDEO	9
<i>Projectors</i>	9
<i>Players and Monitors</i>	9
<i>Mixer</i>	9
PICTURES	10

Plot



THEATER WINTERTHUR	Theater Winterthur Theaterstrasse 4 / 6 CH - 8402 Winterthur Schweiz / Switzerland		
	Bühnengrundriss		
Blatt Nr. 14016-1	Blatt	A2	Datum 01.01.2006



Audio

Permanently installed

Mixing Desk Front of House (FOH)

1x Yamaha PM7

Loudness Monitoring

1x AMIX AFF series 3

Signal Distribution / Patch

2x Rio 3224-D2 stationary

28x Channels analog patch bay stage to patch bay sound booth

40x Channels analog patch bay sound booth to blow out XLR FOH

14x Patch bays with a total of 45 Mic and 29 loudspeaker channels distributed on stage

1x Patch bay with 4 mic-channels on lighting bridge over sound booth to patch bay stage

1x Patch bay with 2 mic-channels on balcony to patch bay sound booth

1x Ghilmetti patch bay stage with 2x Harting HAN72 to FOH and soundbooth. 32 channels

Signal processing

1x Yamaha DME 64 for intercom / dressing rooms / recreation rooms / light and sound booth signal routing / processing (10 AKG Shotgun mic`s)

System for the hearing impaired

2x Amp univox 650 for induction loop

1x Sennheiser infrared senders with 6 transmitters and 20 under-the-chin receivers

1x Mobile Connect System (over WIFI) With 10 iPod + headphones and induction loops

PA loudspeakers per side (portal)

7x Alconsaudio QR24

3x Alconsaudio QM24

1x Alconsaudio BF362

1x Alconsaudio Sentinel 10 Controlleramp

Center (Portalbridge)

12x Alconsaudio QR24

1x Alconsaudio Sentinel 10 Controlleramp

Delay line right

1x K+F CA 1001

Effects speakers:

- 6x K+F CA 106
- 2x Turbosound Impact 80 on light bridge (diffuse)
- 2x Alcons VR8 (balcony)

Installed monitoring per side (in portal towers):

- 4x Alcons LR7
- 1x Alcons LR7B

Installed monitoring center (in lighting bridge)

- 4x Alcons LR7

Mobile monitoring stage

- 6x Sentinel10 Amp-channels

Mobile equipment

Mixing Desk, Stagebox, Amps, Speaker

- 1x Mixing Desk Yamaha CL3 (Dante)
- 2x Rio Stagebox 3224-D 32 in / 16 out (Dante)
- 2x Rio Stagebox 1608-D 16 in / 8 out (Dante)
- 1x Amp Yamaha XMV 4280 4 Channel (Dante)
- 9x Alconsaudio LR18 Line Array
- 6x Alconsaudio RR 12 Top
- 4x Alconsaudio QR24 Top
- 4x Alconsaudio BC332 Sub
- 4x Alconsaudio SR9 Nearfill
- 8x Alconsaudio VR8
- 2x Alconsaudio VR12 60°
- 2x Alconsaudio VR12 90°
- 4x Alconsaudio Sentinel 10
- 6x K + F SW 118E – SP subwoofer active
- 2x K + F 1215-9 SP top active 60°
- 2x K + F 1215-9 SP top active 90°
- 4x K + F CA 1215-9 top passive 90°
- 9x K + F Nearfill Passio
- 2x K+F-Controller CD44 with 4- channel Poweramp QSC

Players / recording devices

- 1x Tascam MD-CD1 (XLR + Chinch)
- 1x DN-2100F (2 CD-Player-Chinch)

THEATER **WINTERTHUR**

Audio & Video Equipment

Juni 2021

- 1x DN-M2300R (2 MD Player-Chinch)
- 2x Sony CD-Player CDP-12 (XLR + Chinch)
- 2x Tascam CD – 01U Pro
- 8x MacBook Pro incl. Ableton Live, Qlab
- 2x MetricHalo MIO2882
- 1x Motu M2 Thunderbolt 3 Interface
- 1x Zoom Hn4 Pro

Mics/DI

- 4x AKG C 747
- 2x AKG C-414 B-ULS
- 2x AKG C-214 ST – Stereo matched
- 4x AKG SE 300 B mit 4 x CK 98 - 4 x CK 93 – 2x CK 91
- 6x Audio Technica AT 4021
- 8x Crown PCC 160
- 2x Shure SM 57
- 3x Shure Beta 58
- 6x Shure SM 58
- 1x Shure Beta 91
- 3x Shure 98 A/C
- 1x Shure 565SD (with switch)
- 1x Shure 545SD (with switch)
- 1x EV N/D868
- 1x EV RE 20
- 2x Neumann KMS 105
- 8x Neumann KM 184 (matched pairs)
- 3x Sennheiser e606
- 4x Sennheiser MD421
- 1x Lectern with 2x dpa d:vote
- 4x Bss Ar-133 Active D.I.
- 7x ARX Audibox usb D.I. plus analog
- 6x D.I. passive
- 7x DPA 4066-F (omni)
- 2x DPA 4066-F (omni) small
- 4x DPA 6066 (omni)
- 6x DPA 4099
- 18x DPA 6061 (Beige)
- 10x DPA 6061 (Black)
- 2x Schoeps CMC 6U (matched pair)
- 6x Shure MX412D/C gooseneck desktop Mic

Stands

- 14x Micstand tall K&M incl. boom (black)
- 12x Micstand short incl. boom (black)
- 6x Micstand K&M 260/1
- 6x Speakerstand K&M (black)

Microports (Permanently installed)

- 18x Channel Shure Axient Digital with:
- 18x ADX1 Bodypacks
- 18x AD2 Handmics with 18xSM58 Caps 4x KSM-9 Caps and 4x Mute module

Microports (Mobile)

- 6x Channel Shure Axient Digital with:
- 6x ADX1 Bodypacks
- 6x AD2 Handmics with 6x SM58 Caps

Intercom

- 12x Riedel acrobat (wireless)
- 11x Clearcom 2 channel wired

Time code

- 3x Rosendahl Time code generator

Video

Projectors

- 3x Barco Projector RLM-W14, 1920 x 1200, 13.500 ANSI-lumens
- 2x Complete Projector lense set
- 1x Barco PGWU-62L-K 6000 lumen with 1.52-2.52:1 Objectiv
- 1x Benq TH682ST
- 3x Blacky shutter

Players and Monitors

- 1x HDMI DVD Player Sony Blue Ray Disc / BDP - S500
- 1x DVD Player Sony / DVP - NS 590 P
- 4x AG-Neovo HX24 Monitor Full HD / SDI capable
- 2x AG-Neovo HX 24 Monitor fix at balcony railing
- 2x BENQ 24zoll Monitor GL 2450-B
- 8x Macbook Pro with QLAB
- (2x Macpook Pro also with Resolume Arena)

Mixer

- 1x Edirol V8
Specifications:
Edirol V-8 VJ-Mixer - 8x video inputs (BNC and S-Video) or 7x video inputs and 1x RGB input (with Scan Converter)
Monitor Outputs
- 2x TBC synchronized channels
Professional T-Bar

- 1x Black Magic Atem 2 M/E Switcher
- 1x Black Magic Atem 2 M/E Switcher + Hardware Console
- 1x Black Magic Atem mini Pro

Umsetzen

- 2x Black Magic HDMI to SDI mini converter
- 2x Black Magic micro converter bidirectional
- 2x Black Magic Recorder (Thunderbolt 2)
- 1x Roland scan converter VC-1-SC
- 1x Level One VGA/Cat.5 transmitter/receiver
- 1x ATEN HD/base -T Extender transmitter/receiver

Pictures

