

Technical Rider

Rear Stage

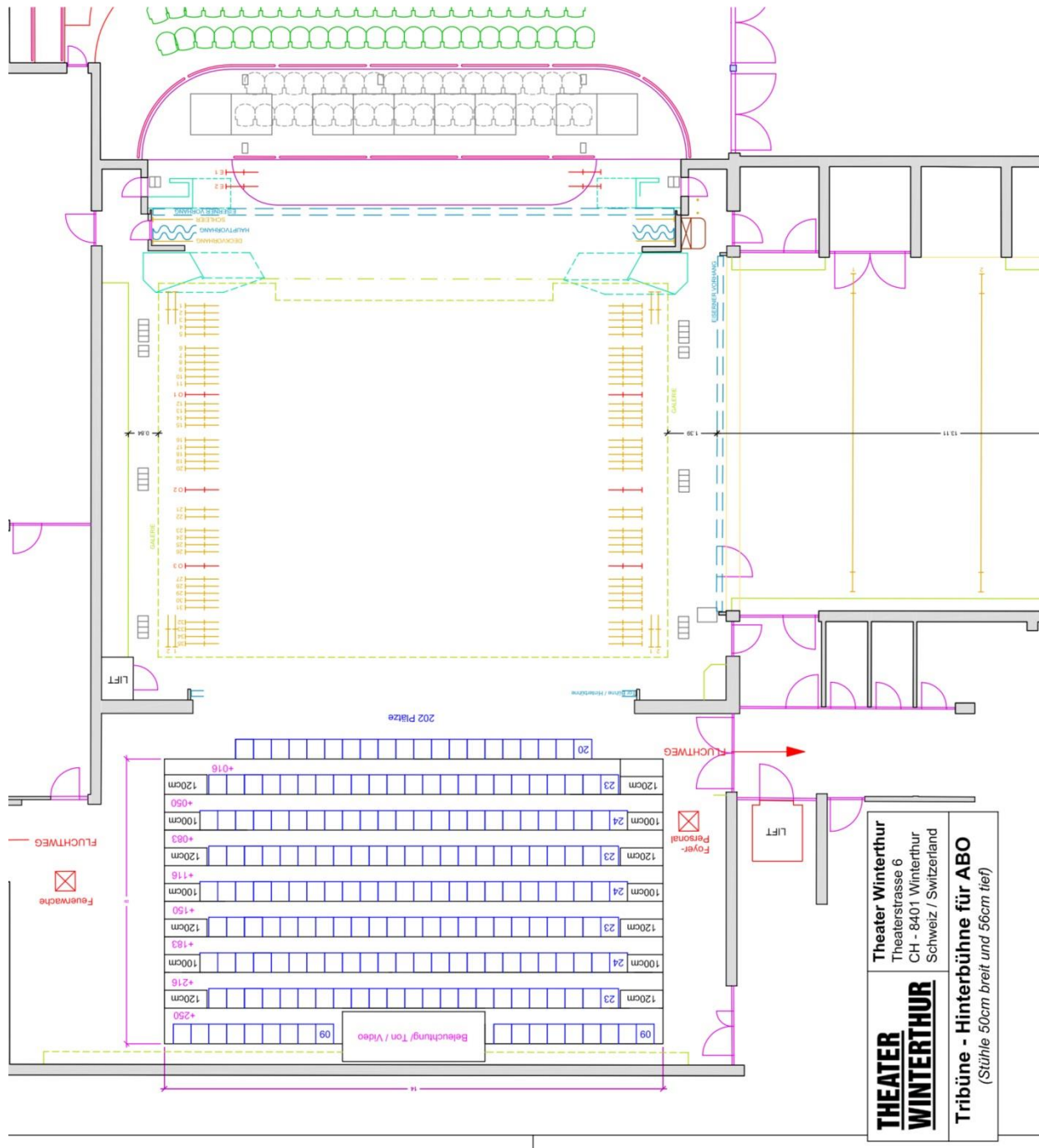
Reto Landolt

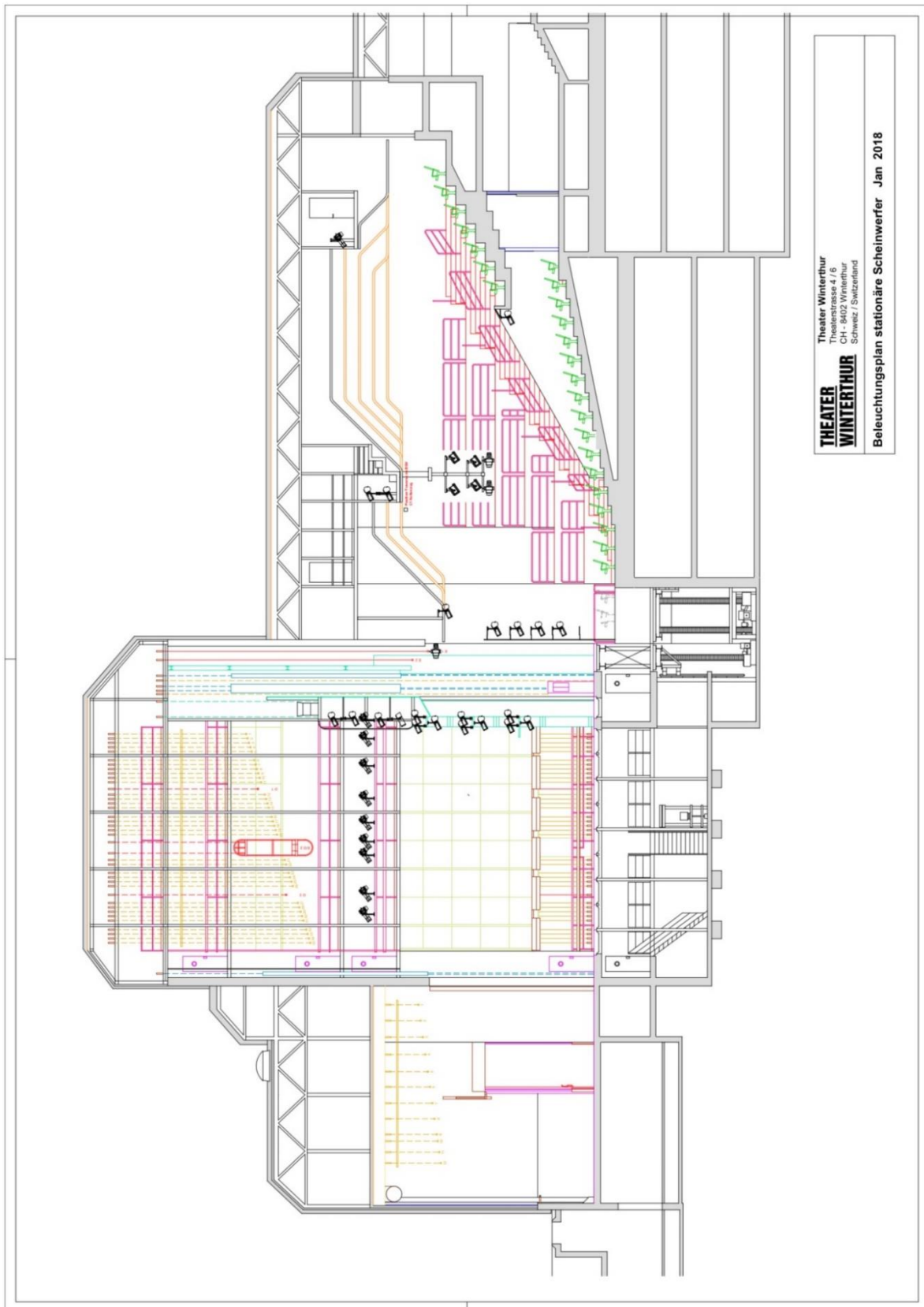
April 2019

Index

PLOT	3
STAGE AREA	5
MAIN STAGE	5
<i>Dimensions</i>	5
<i>Rear proscenium (with iron curtain)</i>	5
<i>Fly galleries</i>	5
<i>Manual flybar 1-35</i>	5
<i>Panoramic bars</i>	5
REAR STAGE	5
<i>Dimensions</i>	5
<i>Electric bars 1-12</i>	5
<i>Delivery gate</i>	5
<i>Carrier</i>	5
UNDERSTAGE	5
<i>Dimensions</i>	5
<i>Trap mechanism 1 + 2</i>	5
<i>Trap lid</i>	5
BORDERS, CURTAINS, CARPETS, RISER	6
ROSTRUM	6
<i>Dimensions</i>	6
LIGHTING EQUIPMENT	6
SOUND AND VIDEO EQUIPMENT	6
PICTURES	7

Plot





You may receive DWG plots on demand.

Stage area

Main stage

Dimensions

16.00m wide, 13.00m deep, height grid 18.70m

Rear proscenium (with iron curtain)

Width 12.35m, height up to 7.40m

Fly galleries

1. Gallery: 8.45m (*Height lower edge*)
2. Gallery: 11.52m (*Height lower edge*)
3. Gallery: 16.64m (*Height lower edge*)

Manual flybar 1-35

Flybar length: 11.75m (with extension 13.00m), Ø70mm, height: 18.52m

M_{max} : 350kg

Six arbitrary flybars can be used as motorized bars. (M_{max} : 500KG)

Max. 3 contiguous bars (for example bar 21 + 22 + 23)

Panoramic bars

Main stage L + R 2 panoramic bars each

Bar length: 9.60m, Ø70mm, height: 18.52m, M_{max} : 350kg

Panoramic bars L2 + R2 with black curtains.

Rear stage

Dimensions

17.00m wide x 10.00m deep, height 8.90m

Electric bars 1-12

Flybar length 15.00m, Ø70mm, height: 08.90m, M_{max} : V1=250kg, V2=150kg

Delivery gate

1.96m wide x 4.00m high. (Top edge delivery ramp to floor: -0.85m)

Carrier

Chain hoist; M_{max} : 500kg

Understage

Dimensions

12.50m wide x 10.00m deep, height 5.15m

Trap mechanism 1 + 2

1.00m x 1.00m surface each, lift height 2.60m, scenic mobile 0.00m (stage) to -2.56m

M_{max} : 250kg

Trap lid

1.14m x 1.14m, 99 lids individually removable

Borders, curtains, carpets, riser

Please refer to the document Stage Equipment in "Spielstätte Bühne".

Rostrum

Dimensions

14.00 x 8.00m

202 seats

Lighting equipment

Please refer to the document Lighting Equipment in "Spielstätte Bühne".

Sound and video equipment

Please refer to the document Sound & Video Equipment in "Spielstätte Bühne".

Pictures



