

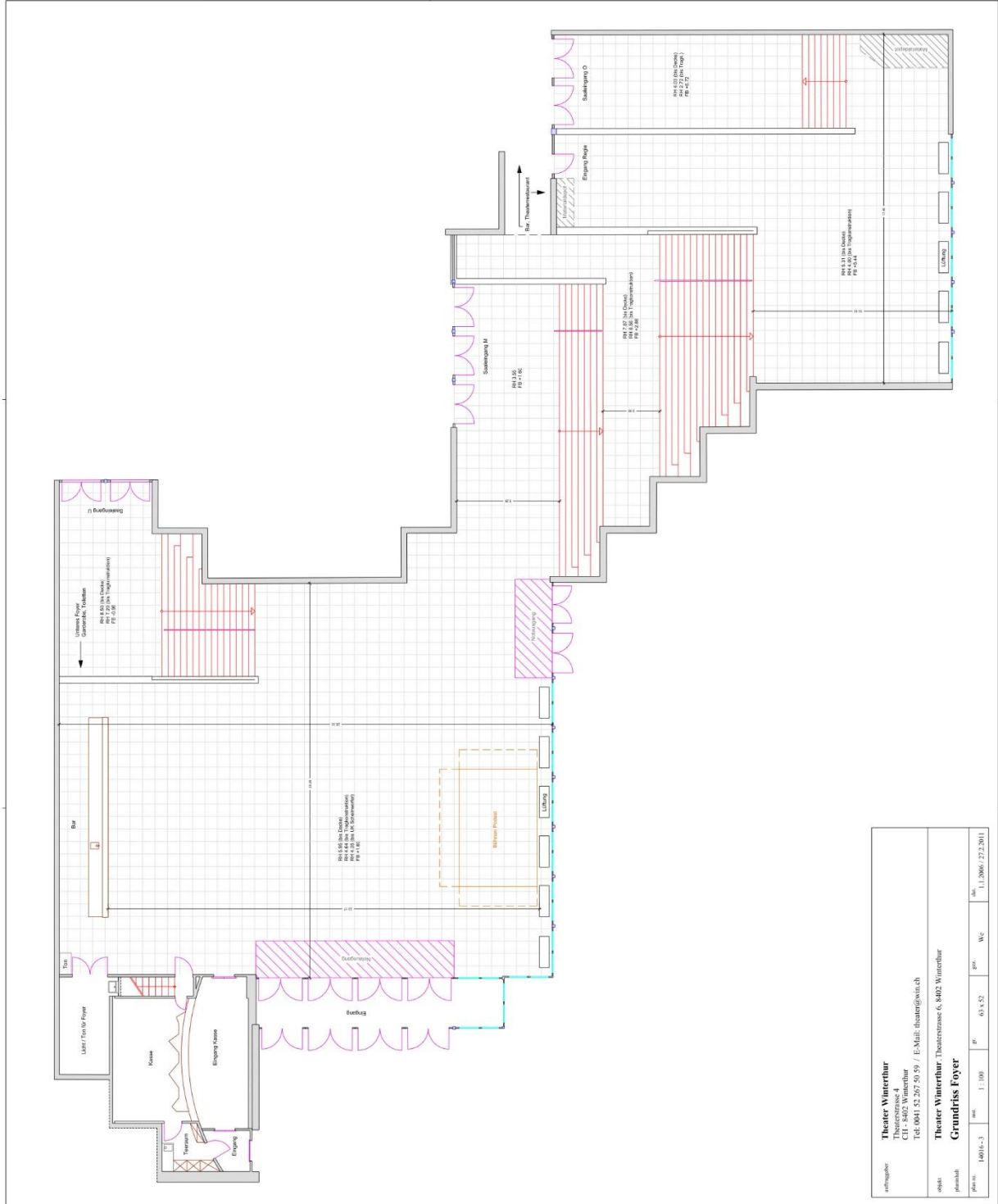
Technical Equipment Foyer

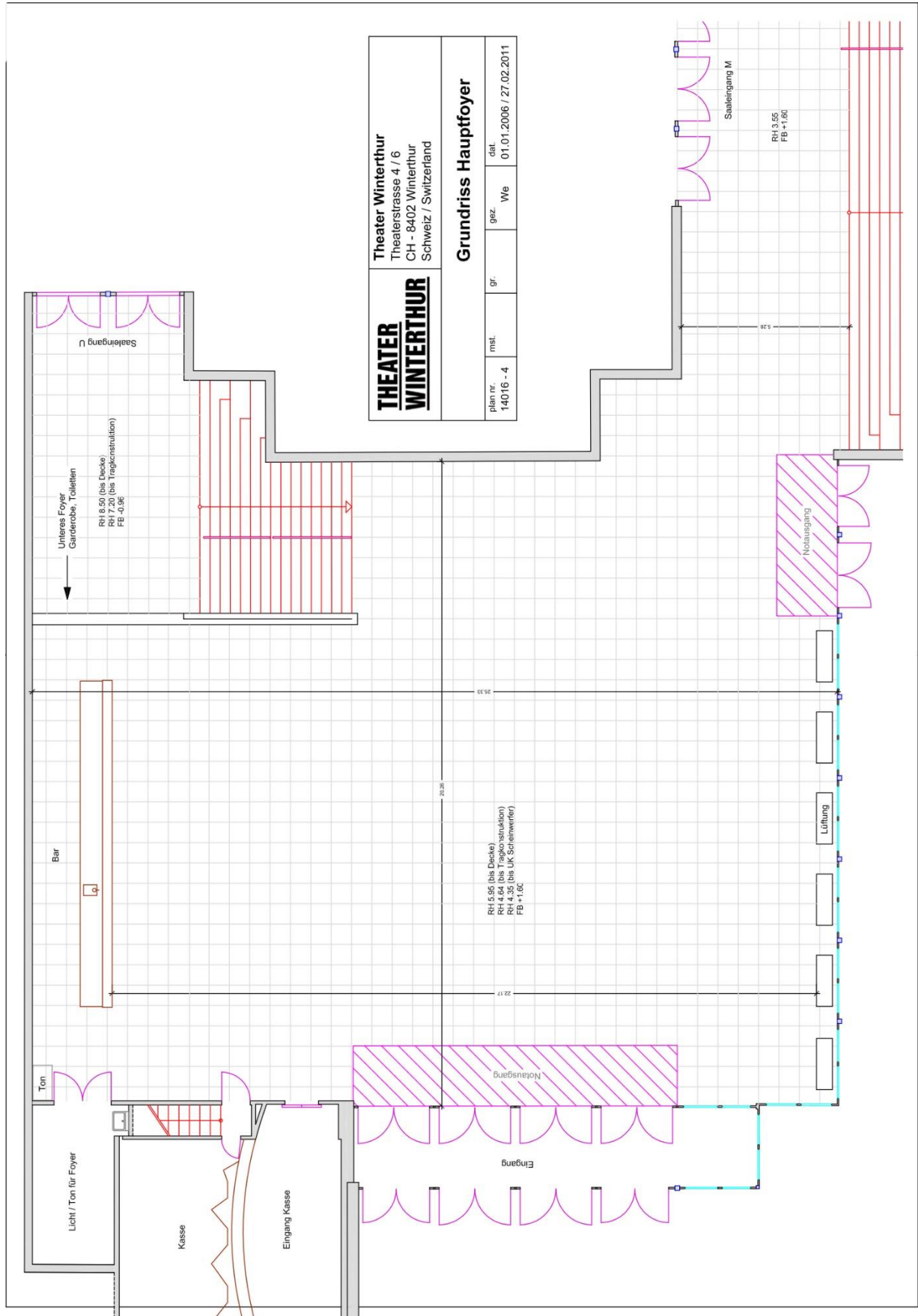
January 2022

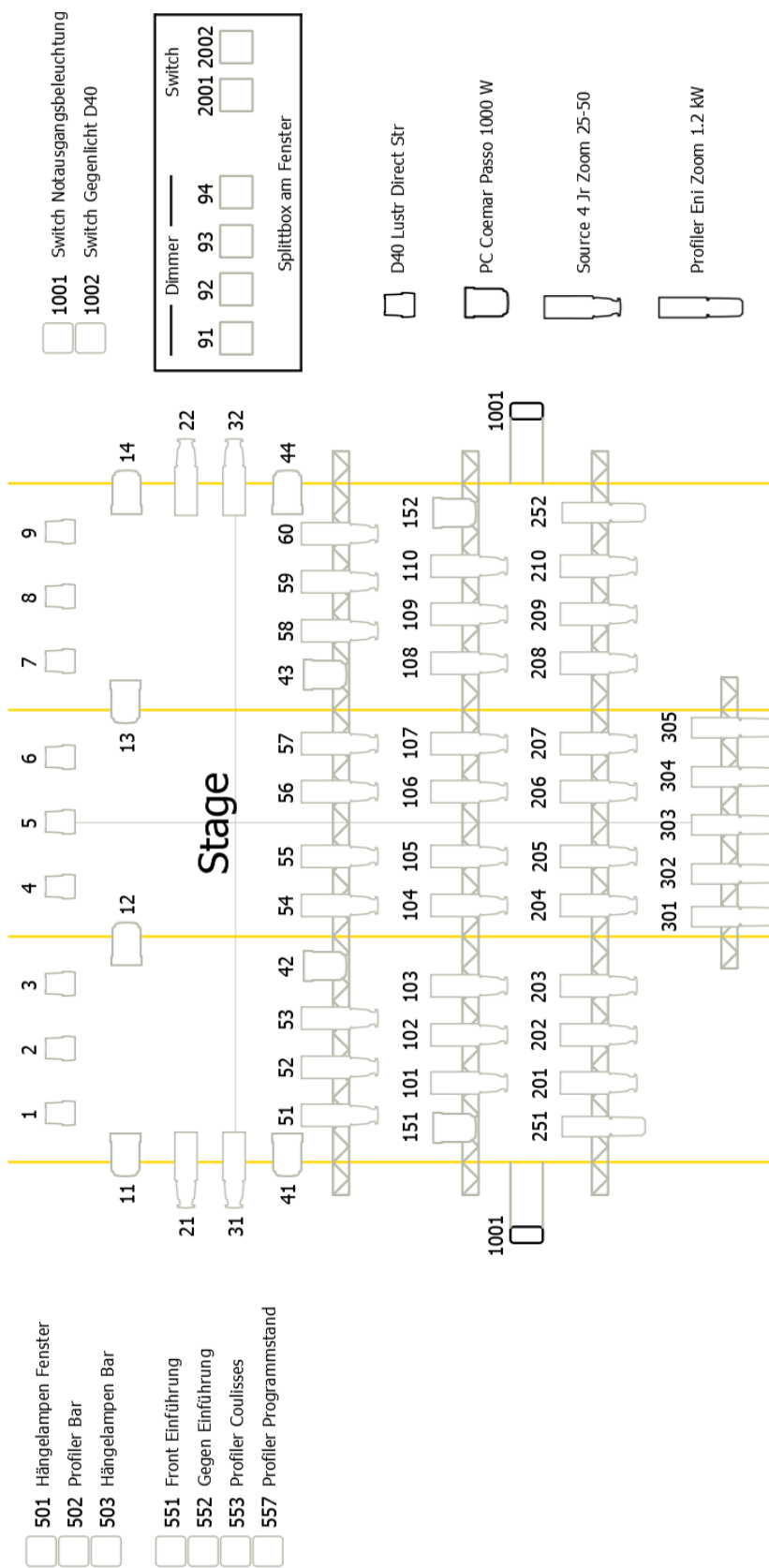
Index

| | |
|---|----------|
| PLOTS..... | 3 |
| USE OF THE FOYER | 7 |
| HOUSE..... | 7 |
| DIMENSIONS..... | 7 |
| OCCUPANCY | 7 |
| BAR | 7 |
| TABLES, CHAIRS | 7 |
| WARDROBES | 7 |
| STAGE EQUIPMENT | 7 |
| TRIBUNE | 7 |
| DANCE CARPET..... | 8 |
| LIGHTING EQUIPMENT | 8 |
| FIXTURES | 8 |
| CONSOLE | 8 |
| AUDIO- AND VIDEO EQUIPMENT | 8 |
| FOYER MIDDLE | 8 |
| UPPER FOYER..... | 8 |
| MOBILE EQUIPMENT | 8 |
| VIDEO (INSTALLED) | 8 |
| PICTURES..... | 9 |

Plots







Plot to edit on demand.

Use of the foyer

The foyer of Theater Winterthur can be used in many different ways. It is of course the entrance area during the shows on our main stage or rear stage. It can also serve as a room for fairs, congresses and other events. It can be rented through a variety of different companies.

We can build a small stage in front of the window front for a music event or even build a tribune for smaller theatres. We can close the area of 14.00 x 10.00m with black curtains. We can cover the "stage" with a black dance carpet.

House

Dimensions

Main foyer: approx.: 400m²

Upper foyer: approx.: 170m²

Lower foyer: approx.: 100m²

Height floor to steel beams: ca. 4.00m

Occupancy

Number of seats concert seating: ca. 350 people (depending on stage dimensions)

Number of seats banquet seating: max. 320 people (without stage)

Upper foyer number of seats banquet seating: ca. 120 people

Bar

Staff of Theater Winterthur.

Tables, chairs

Tables 80 x 180cm

Bistro tables

Standing tables

Rattan bar tables and chairs

Numbers on demand.

Wardrobes

See document House in «Spielstätte Bühne»

Stage equipment

Tribune

9.00 x 6.00m ProfiStage platforms, for 80 people

Dance carpet

One set Gerriets Vario
5 tracks L: 10.00m W: 1.60m

Lighting equipment

Fixtures

10x PC: Coemar Passo 1000, 1kW, 8.5°-50°
34x Profiler: ETC S4 junior 25°-50°
7x Profiler: Niethammer HPZ 112 D, 1.2kW, 12°-24°
9x LED Par: Desire D40 Lustr

Console

1x ETC Ion with Faderwing (20 Faders)

Audio- and Video equipment

Foyer middle

4 x K&F CA 1215-9; 1 x 4-channel amp QSC CX404; 1 x Yamaha DME 24 for processing;
12-channel multicore from window front to mixer; 4 – channel multicore to other place;
8 –channel «Querverbindung» to «Tonloge»
1 x Yamaha QL1 (Dante)

Upper foyer

5 x Ramsa WSA-200: 2 x stereo amp QSC 1400; 4 – channel multicore from window front to mixer; 8 –channel «Querverbindung» to «Tonloge»

Mobile equipment

See document Audio- and Video equipment in «Spielstätte Bühne»

Video (installed)

2x Barco projector 6000 lumen (1x entrance U, 1x next to the main entrance)

Pictures

